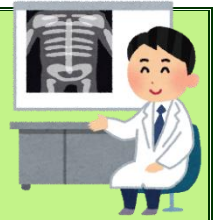



2021 School Year

Fall Chest X-rays (November)

for October 2021 Entrants



Date/Time	November 16 (Tue.) 12:00-13:00 (Please be on time.) 12:00-12:30 (men), 12:30-13:00 (women) *Please check your appointment time using the online reservation system.
Appointments Instructions	All fall chest X-rays will be by appointment only. Please make a reservation online in advance. See below for instructions. Reservations accepted: November 11 (Thu.)-14 (Sun.)
Exam. Items	Chest X-ray, height/weight
Place	Tohoku University Student Health Care Center (Kawauchi Kita Campus) A09 Map→  *There are no parking spaces. Please come by public transportation etc.
Eligibility	October 2021 Entrants (Includes those who entered the university in/after May 2021 and non-degree students who will be enrolled for 1 month or longer.) *Excludes short-term Visiting Trainees. *Excludes those who underwent the Student Medical Examination in May 2021 (for example, transfer students). *Excludes those who were eligible for the Student Medical Examination in May 2021.
Please bring:	Student ID card, or document (ex. enrollment notice) that shows your name & student ID number Note: If you do not bring the above, you will not be admitted to the examination.

Making an Appointment

*All fall chest X-rays are by appointment only.

Please use the QR code at right, or URL below, for the online reservation website.

https://web.star7.jp/mypage/mobile_info.php?p=b5fb0024ab

(After you register, an email confirming your reservation will be sent from kenshin@star7.jp.

Please set up your mail filter etc. so you are able to receive it.)

Notes on Undergoing the Examination *See attached for details.

*Please wear a plain t-shirt during the x-ray. (Do not wear printed or embroidered shirts, or clothes with joined bottoms and tops, such as one-piece dresses etc.)

*Do not wear a shirt with metal clasps/buttons, or necklaces, etc.

*If you have long hair, please tie it back with an elastic band etc.

X-ray Results and Medical Exam Certificates

*If you require additional tests, you will be contacted by phone by about December 3.

*Medical Examination Certificates will be issued by the Student Health Care Center on/after December 16.

Please bring your Student ID card.

Working Students

*If you underwent a medical exam that included a chest X-ray at your place of employment (or are scheduled to do so), you may bring a photocopy of your results to the Student Health Care Center in place of undergoing the fall chest X-ray. However, in this case the center will be unable to issue a Medical Examination Certificate.

Student Medical Examinations from Next Year

*Please undergo the Student Medical Examination in May from next year on.

The examination may be canceled if the COVID-19 pandemic worsens.

If this happens, updated information will be posted on the Student Health Care Center and reservation websites.

Please check them for details.

In the event of an emergency (natural disaster etc.), please see the Student Health Care Center website:

<http://www.health.ihe.tohoku.ac.jp/>

Inquiries: Student Health Care Center

Examination Office Phone: 022-795-7829

