

# Do you know soil around us?

Instructor: Prof. M. Kazama (TEL 022-795-7434, [motoki.kazama.b2@tohoku.ac.jp](mailto:motoki.kazama.b2@tohoku.ac.jp))  
○Asst. Prof. A. Kamura (TEL 022-795-7437, [akiyoshi.kamura.a4@tohoku.ac.jp](mailto:akiyoshi.kamura.a4@tohoku.ac.jp))

Number of student: 6

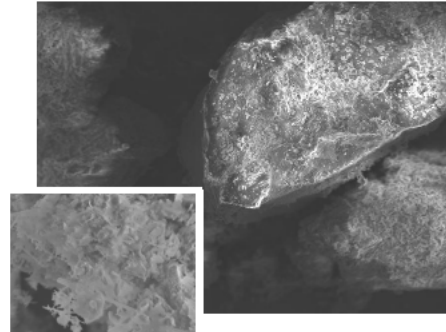
Day and Time: 2nd semester, Thursday, 5th class

Kick-off date, time, and meeting place: October 6th (Thu), 16:30, Civil engineering and architecture, 3F 303  
(Geotechnical Engineering Laboratory)

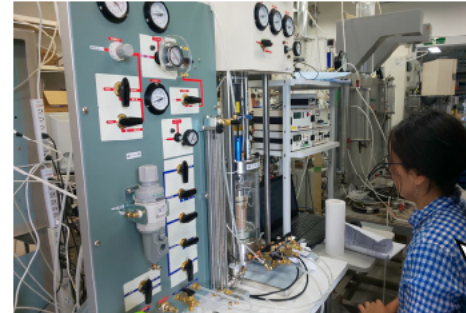
Abstract: The ground supports all of our lives. In order to build strong and safe infrastructures, we need to know the property of soil. However, many people do not pay much attention to the soil that composes the ground in their daily lives. Therefore, in this lecture, we will perform various measurements and simple mechanical tests with the soil you sampled as an example. What will you discover from them?



**Sampling**



**Observations and  
measurements**



**Mechanical test**

