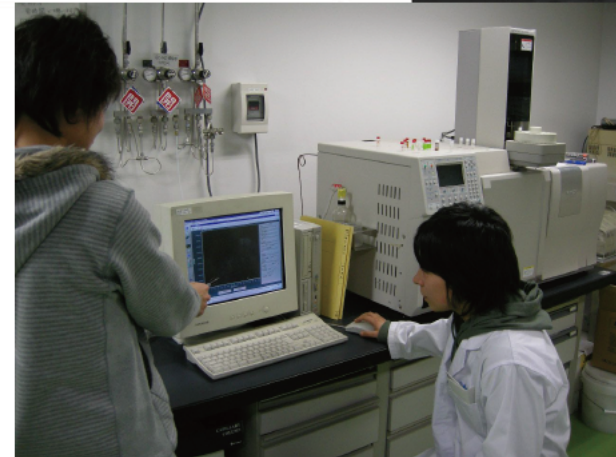
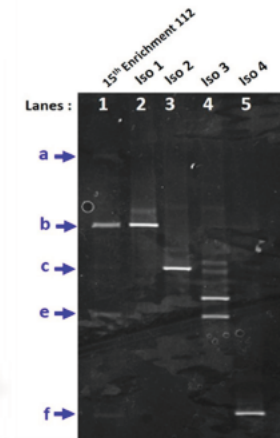


# Let's study the water at hand

Collect surface water samples existing in familiar environment such as river water, lake water or rainwater and analyze the chemical substances and microorganisms in the samples using the equipment in the laboratory. Discuss about the safety of water using the results obtained.



- Starting date: 4th October, 16:20
- Staff (Graduate School of Environmental Studies)
  - Prof. C. Inoue ( 022-795-7403 [chihiro.inoue.b1@tohoku.ac.jp](mailto:chihiro.inoue.b1@tohoku.ac.jp))
  - Assist. Prof. M-F, Chien ( 022-795-7404 [meifangchien@tohoku.ac.jp](mailto:meifangchien@tohoku.ac.jp))