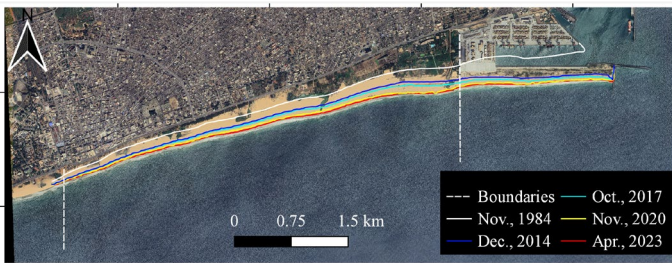


Let's Calculate Historical Shoreline Changes

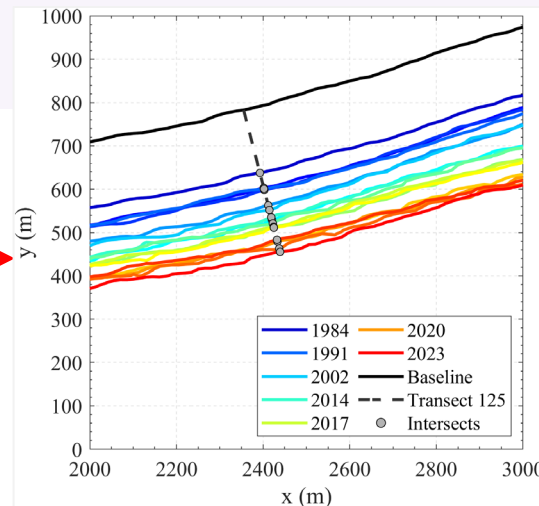
Title: Assessment of historical shoreline change using satellite images

Summary

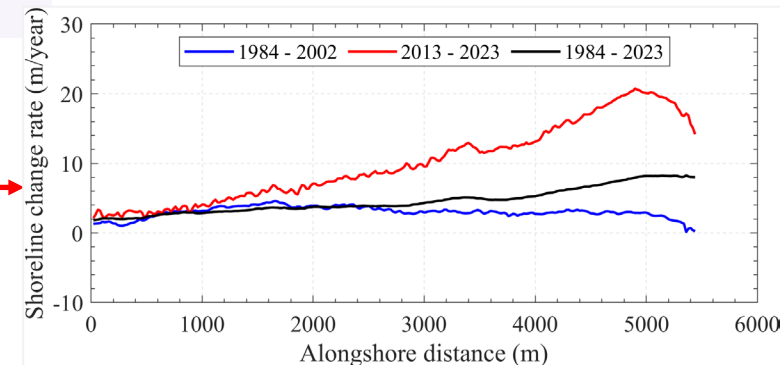
- Coasts are eroding because of sea level rise and human activities, and this causes many problems for society and the economy
- The rate of coastline erosion has increased over the past decade
- We need to understand the historical trends in coastline erosion to take necessary actions to prevent its adverse impact
- You will learn to use new tools
 - [CoastSat](#), ArcGIS, MatLab/MS Excel



Locate the coastline position over the past years



Extract coastline positions across-cross-shore profiles



Calculate the rate of coastline change over different periods

Acceptable number of students:
Maximum of four students

For more information

Prof. Keiko Udo (keiko.udo.c1@tohoku.ac.jp)

Assist. Prof. Janaka Bamunawala
(j.bamunawala@tohoku.ac.jp)

[Hydro-Environmental Informatics Lab](#)