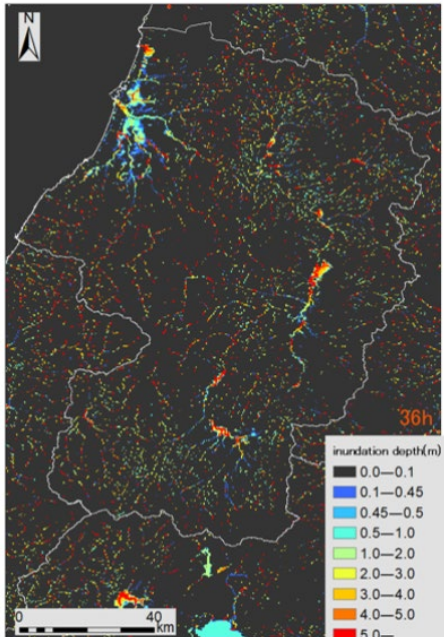


Studying watershed environment from engineering perspective !

Department of Civil and Environmental Engineering :
Dr. Yusuke Hiraga, Professor So Kazama
yusuke.hiraga.c3@tohoku.ac.jp

- This course provides the opportunity to learn observation and analysis of the watershed environment to scientifically understand its behavior.
- We will also learn how such observations and analyses are used in river design from an engineering perspective.
- Through hands-on experiences—such as numerical simulations of river flow and field measurements at nearby rivers—you will acquire essential methods for conducting these analyses. Let's think together about what an ideal water environment should look like in the future!

Flood and inundation simulation



Ecological survey at the river



Movie introducing our lab :

<https://www.youtube.com/watch?v=aqi3tX1ELbc>



Movie introducing Dr. Hiraga's research :

<https://www.cc.tohoku.ac.jp/service/supercomputer/aoba/>