

Take a Glance at the Semiconductor LSI World ~Where SMALL Chips Lead the LARGE Industry~

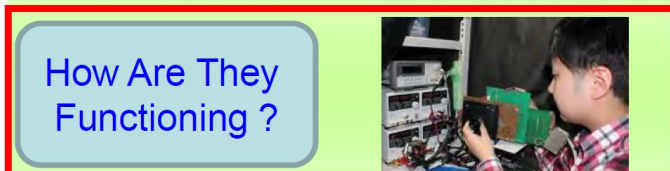
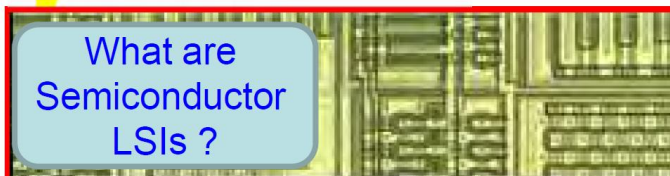
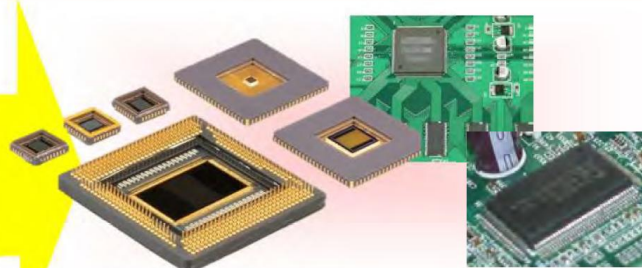
Advisers: Professor Rihito Kuroda
Assistant Prof. Takezo Mawaki
Open Seats: 6 students
Term: 2nd Semester



Course Description

Almost EVERYTHING used in the Human Society/Industry

Semiconductor LSIs are working inside



Have You Ever Imagined ?

Semiconductor LSI chips are used in almost any scene of the today's human society. It's no exaggeration in saying that our life style highly relies on the Semiconductor LSI. However, not many people know the roles of the Semiconductor LSI chips and reason why they are so spread out. It's because the chips are so tiny and hidden deep inside of the electrical goods. Or, even though one finds a chip, it looks just like a "BLACK BOX". This interaction course offers you to experience in dismantling Semiconductor LSI chips, microscopic observation and LSI Layout pattern analysis, and take you to the **HUGE WORLD** expanding in the **SMALL BLACK BOXES**.

Contact information

email : takezo.mawaki.c3@tohoku.ac.jp

TEL : 022-795-4833

Electronic Engineering, and Information Engineering (ECEI) Building No.2, 4th floor, Room 404

(<https://www.eng.tohoku.ac.jp/map/?menu=campus&area=d&build=12>)